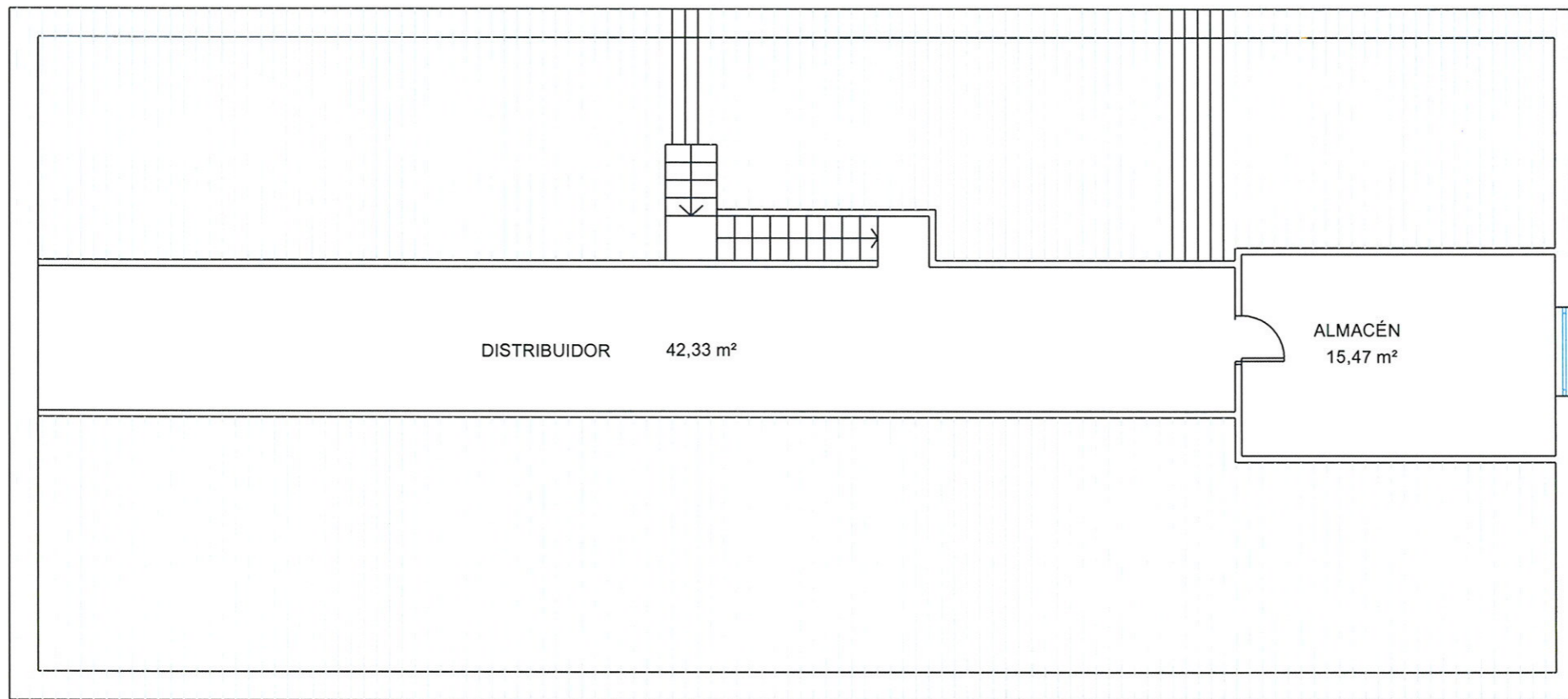
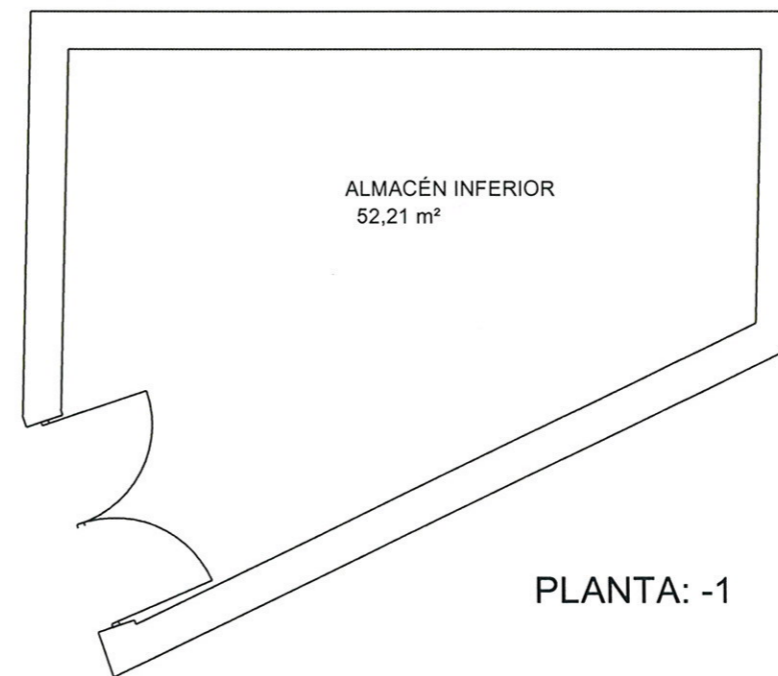


**ANEXO Nº V**

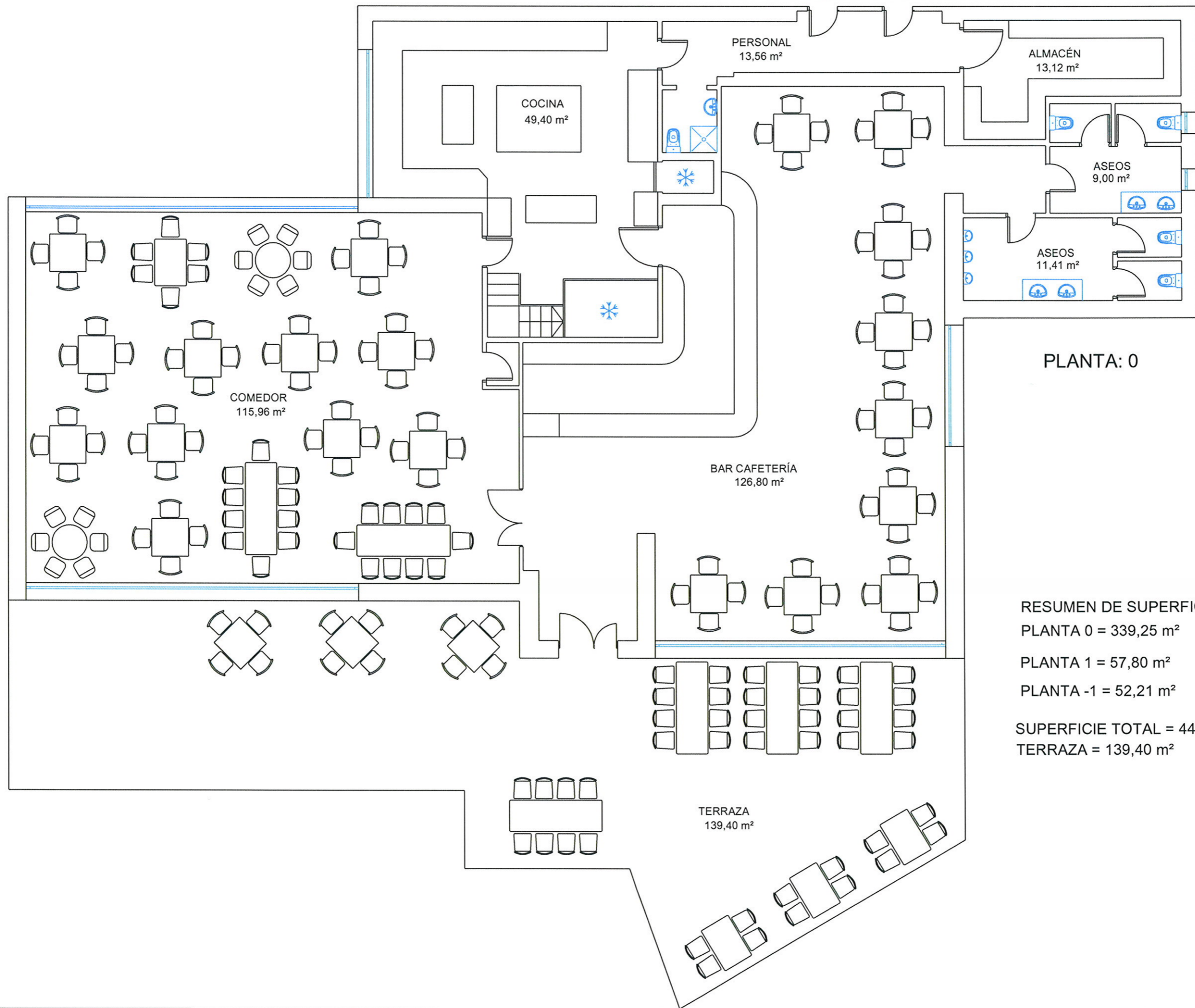
**PLANOS DEL LOCAL**



PLANTA: 1



PLANTA: -1



RESUMEN DE SUPERFICIES

PLANTA 0 = 339,25 m<sup>2</sup>

PLANTA 1 = 57,80 m<sup>2</sup>

PLANTA -1 = 52,21 m<sup>2</sup>

SUPERFICIE TOTAL = 449,26 m<sup>2</sup>

TERRAZA = 139,40 m<sup>2</sup>